



📍 6 Chestnut Drive, Bulkington, Devizes, Wiltshire, SN10 1TB

🏠 Guide Price £325,000

A well presented 3 bedroom family home located in this popular Wiltshire village with countryside views to the rear, an enclosed private garden and single garage to the side.

- A Well Presented Modern Family Home
- Three Bedrooms
- Contemporary Bathroom & En Suite
- Two Reception Rooms
- Modern Fitted Kitchen
- Private Rear Garden With Views Of The Church
- A Sought After Village With A Good Pub
- Garage & Driveway Parking
- Country Walks On The Doorstep

🏡 Freehold

🏠 EPC Rating D



Located within a much sought after Wiltshire village, this smartly presented 3 bedroom semi detached family home is well worth an early viewing!

Internally, the surprisingly spacious layout comprises a light welcoming entrance hall with understairs storage and a door into a 14ft sitting room with a feature fireplace surround and granite hearth. There is a large opening through to a separate dining room with French doors out to the rear garden and views of the village church and churchyard. The kitchen is fitted with an electric oven and 4 ring ceramic hob with an extractor hood over and space for further appliances. On the first floor, the main bedroom is a good sized double with plenty of fitted wardrobes and has the benefit of a modern en suite shower room with wood effect flooring and a Velux skylight. There are two further bedrooms both enjoying views over the rear garden and adjacent churchyard and the fields beyond, and a family bathroom with a contemporary suite and ceramic tiled flooring.

Outside, there is an easy maintenance front garden, whilst the rear garden has also been designed to make it a manageable space to sit out and enjoy with an extended patio seating area, a dry stone wall and concealed oil tank. A side gate leads back to the single garage which has light and power. There is also additional parking in front of the garage.

#### **Situation**

The property is situated within the popular village of Bulkington with views to the rear. There is a good community spirit within the village and a thriving family run public house/restaurant called 'The Well,' there is also a great children's playing field with a fine selection of local schooling in the area including Keevil, Seend, Lavington Secondary and Dauntsey's School all closeby with bus services. Surrounding area provides several miles of circular countryside walks

Devizes town centre lies some six miles east of Bulkington providing a wider range of amenities and a thriving weekly market. The major towns of Swindon, Salisbury, Bath, Chippenham and Marlborough are all within a 25 mile radius. Mainline railway services are available from Chippenham, Pewsey, Trowbridge, Melksham and Westbury providing links to Bristol and London .

#### **Property Information**

EPC Rating: D

Council Tax: Band D

Services: Mains water, drainage and electricity. Oil fired central heating.



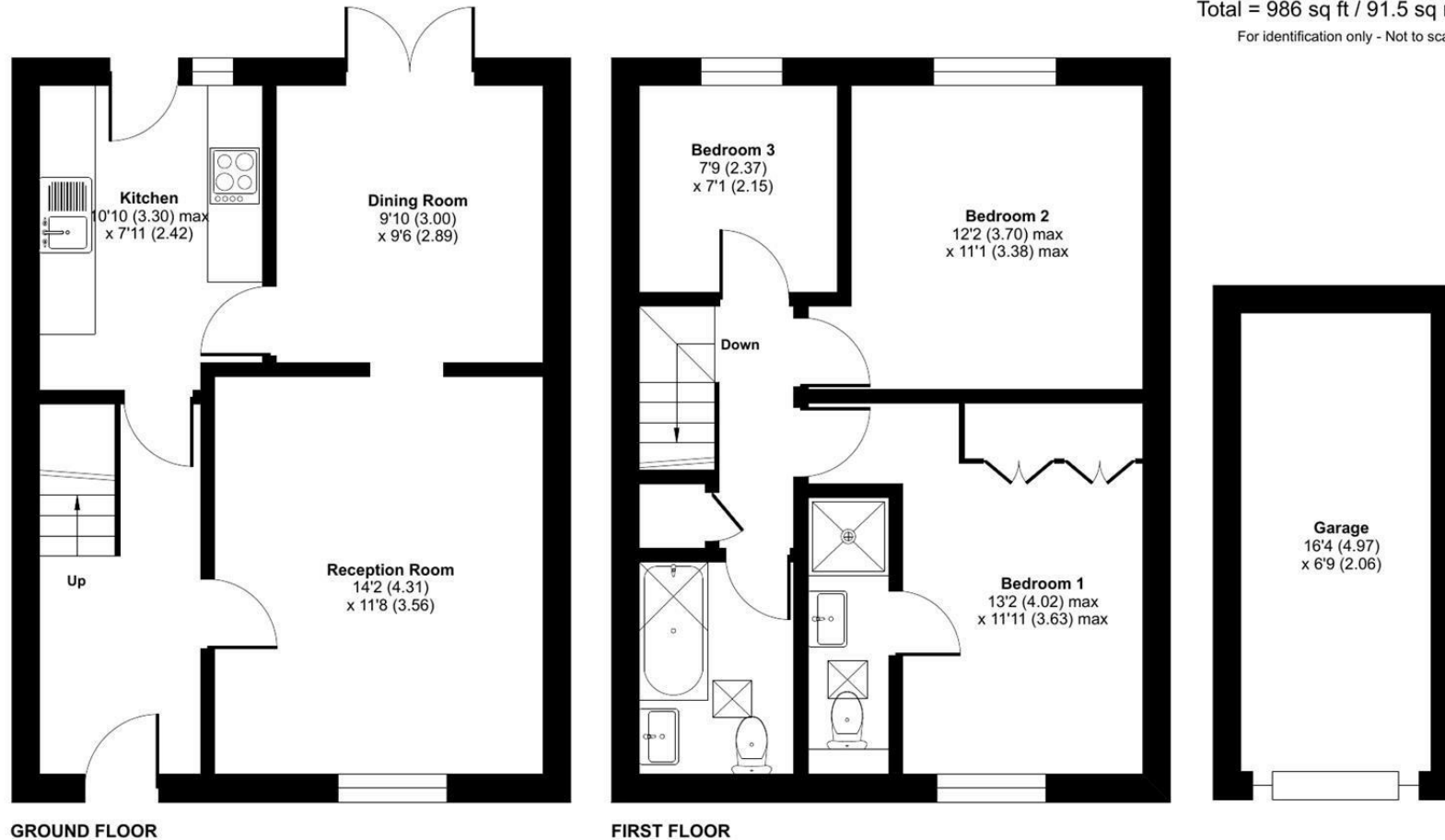
# Chestnut Drive, Bulkington, Devizes, SN10

Approximate Area = 876 sq ft / 81.3 sq m

Garage = 110 sq ft / 10.2 sq m

Total = 986 sq ft / 91.5 sq m

For identification only - Not to scale



 Floor plan produced in accordance with RICS Property Measurement 2nd Edition, Incorporating International Property Measurement Standards (IPMS2 Residential). © ntechcom 2025. Produced for Strakers. REF: 1387588

Disclaimer These particulars, whilst believed to be accurate are set out as a general outline only for guidance and do not constitute any part of an offer or contract. Intending purchasers should not rely on them as statements of representation of fact, but must satisfy themselves by inspection or otherwise as to their accuracy. No person in this firm's employment has the authority to make or give any representation or warranty in respect of the property. All measurements and distances are approximate only. Your home is at risk if you do not keep up repayments on a mortgage or other loan secured on it.